

PRI 40SH

Optic Rotary Incremental Encoder



INCREMENTAL

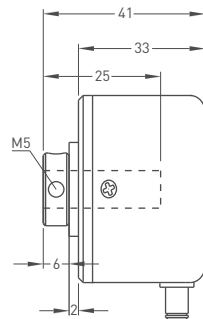
- 40 mm case diameter
- 300 - 360 - 400 - 500 - 512 - 600 - 625 - 720 - 800 - 1000
1024 - 1250 ppr.
- Push-Pull, TTL, Linedriver, HLD output
- Rod diameter 6 - 8 mm
- 3500 rpm max.



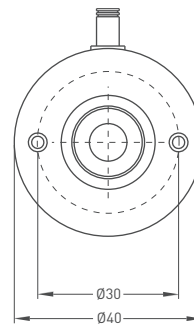
Technical Specifications

Resolution	300 - 1250 ppr.
Output channels	A, B, Z or A, \bar{A} , B, \bar{B} , Z, \bar{Z}
Output type	Push-Pull, TTL, Linedriver, HLD
Power supply	5 VDC, 5 - 24 VDC, 8 - 24 VDC
Power consumption (without load)	< 40 mA (24 VDC)
Cable	1,5 meter (standard) 5 wire + shield (Push-Pull) 1,5 meter (standard) 8 wire + shield (Linedriver)
Max. permissible shaft loading radial	80 N
Displacement speed	3500 rpm
Rod diameter	Ø6 - 8 mm
Rod material	Stainless steel
Case dimensions	Ø40 mm
Case material	Aluminium and painted steel
Protection level	IP 54
Operating temperature	-20°C ... +80°C
Storage temperature	-30°C ... +90°C

Mechanical Specifications



Rod type / Radial



Push - Pull Cable Output

+V : Brown
0V : White
GND : Shield
Ch A : Yellow
Ch B : Green
Ch Z : Gray

TTL - HLD - Linedriver Cable Output

+V : Brown
0V : White
GND : Shield
Ch A : Yellow
Ch B : Green
Ch Z : Gray
Ch A inv.: Blue
Ch B inv.: Red
Ch Z inv.: Pink

Ordering Procedure

Model	Case dimensions	Case type	Rod diameter	Output type	Resolution	Output signal	Power supply	Connector / Cable	Cable output
PRI	40	SH	8	HLD	1024	Z	V3	2M5	R
PRI	40: 40 mm	SH : Semi hollow	R6 : 6mm R8 : 8mm	LTP : Push-Pull LD : Linedriver HLD : High Linedriver TT : TTL	300 - 1250 ppr.	Z : A, B, Z B : A, B ZZ : A \bar{A} , B \bar{B} , Z \bar{Z}	V1 : 5 VDC V2 : 8 - 24 VDC V3 : 5 - 24 VDC	2M5 : 2,5 meter cable 5M : 5 meter cable	R : Radial