

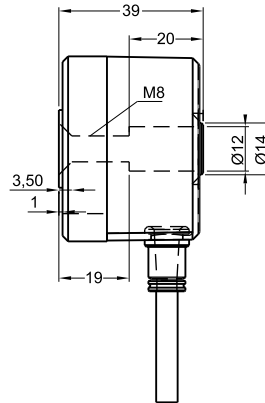
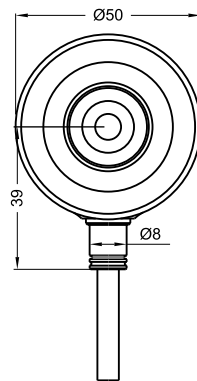
## Optic Rotary Incremental Encoder

- 50 mm case diameter
- Hollow shaft
- 1024 ppr.
- Push-pull, TTL Linedriver or HTL Linedriver output
- Shaft diameter 15 mm
- 3500 rpm max.



### Technical Specifications

Resolution	1024 ppr.
Output Channels	A,B,Z yada A,Ā, B,Ḃ, Z,Z̄
Output Type	Pushpull, TTL Linedriver, HTL Linedriver
Supply Voltage	5V DC, 8-24V DC yada 5-24V DC
Power Consumption (without load)	< 40 mA (24 VDC)
Cable	2.5m (Standard) 5 Wire + Shield for Pushpull 2.5m (Standard) 8 Wire + Shield for Linedriver
Max. Permissible Shaft Loading Radial	100 N
Axial	60 N
Max. Speed	3.500 rpm
Shaft Diameter	Ø15 mm
Shaft Material	Stainless steel
Case Diameter	Ø50 mm
Case Material	Aluminium
IP Degree	IP 54
Operating Temperature	-20°C ... +80°C
Storage Temperature	-30°C ... +90°C



#### Push-Pull Cable Output

+V : Brown  
0V : White  
GND : Shield  
Ch A : Yellow  
Ch B : Green  
Ch Z : Gray

#### TTL - HTL Linedriver Cable Output

+V : Brown  
0V : White  
GND : Shield  
Ch A : Yellow  
Ch B : Green  
Ch Z : Gray  
Ch A inv.: Blue  
Ch B inv.: Red  
Ch Z inv.: Pink

Model	Case Diameter	Case Type	Shaft Diameter	Output Type	Resolution	Output Channels	Supply Voltage	Connector / Cable	Cable Output
PRI	50	KH	15	HLD	1024	Z	V2	2M5	R
PRI	50mm	KH : Hollow	15 : 15mm	LTP : Push-Pull LD : TTL Linedriver HLD : HTL Linedriver	1024 ppr.	Z : A, B, Z B : A, B	V1 : 5V DC V2 : 8-24V DC V3 : 5-24V DC	2M5 : 2.5 meter cable 5M : 5 meter cable 8M : 8 meter cable 10M : 10 meter cable	R : Radial

