



**wieland**



# HELLO VISUALISATION

HMI-ECO Touch Panels simplifies the operation of machines and plants

# SIMPLY ROBUST.



The HMI-ECO touch panel in different sizes by Wieland – for process visualisation, operation, monitoring and diagnosis

## YOUR BENEFIT

- + High quality housing and optimized screen size
- + Protection class IP66 for front against strong hose water
- + Extended operation temperatures from -20°C up to +60°C
- + Metal fasteners



HELLO TOUCH PANELS.

# PERFECT ENHANCEMENT.



Perfectly coordinated solution packet with HMI-ECO and **SAMOS**®PRO COMPACT safety controller

## YOUR BENEFIT

- + Communication via integrated Ethernet or Modbus TCP
- + Easy programming with **HMIPLAN** via Ethernet and USB
- + Coordinated IP addresses
- + Special drivers for **SAMOS**®PRO COMPACT



HELLO TOUCH PANELS.



Touch-Panel in different sizes for the processs visualisation, operation, monitoring and diagnosis

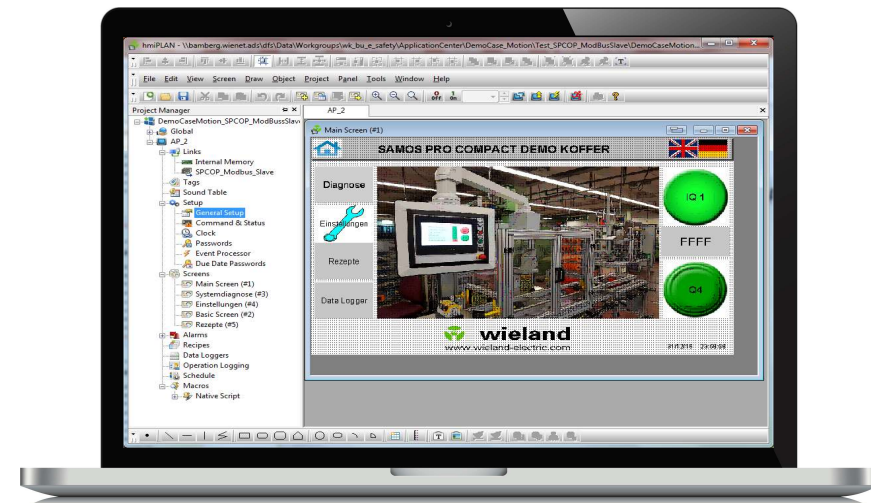
# EASY VISUALIZATION.



Simple operation of **HMIPLAN** software for extensive visualization

## YOUR BENEFIT

- + Project structure for multiple applications or machines
- + Free image database
- + Easy conversion to other screen sizes
- + Non-volatile memory for remnant data such as counters
- + User and password management
- + Alarm notifications per E-mail
- + Data logger, receipt management and more...



HELLO TOUCH PANELS.



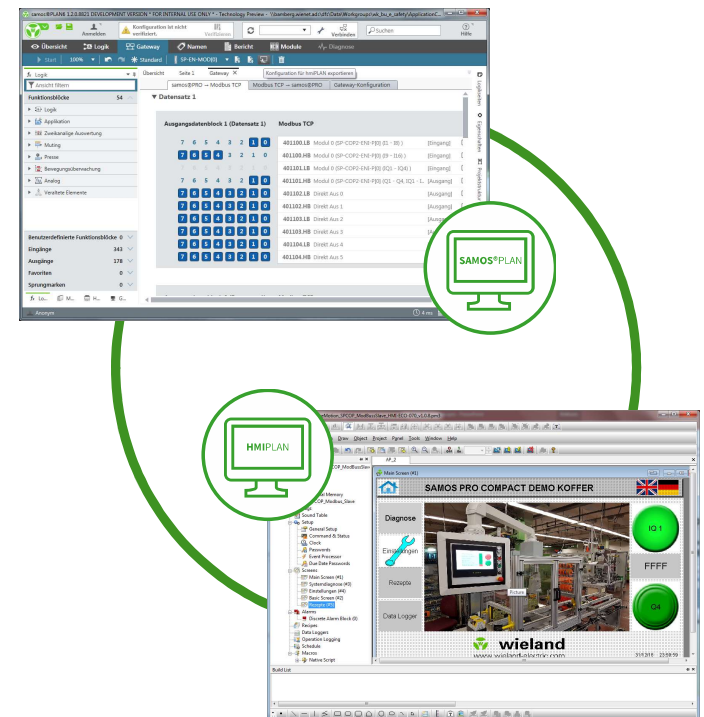
# SEAMLESS DATA EXCHANGE.



Comfortable exchange of variables and addresses between **SAMOS®PLAN 6** and **HMIPLAN**

## YOUR BENEFIT

- + Save time with export/import between **SAMOS®PLAN 6** & **HMIPLAN**
- + Less user errors because of constant variable names and addresses
- + Easy start-up with default parameters in **HMIPLAN** → Just click on “continue”
- + Switch between Modbus TCP Master or Slave with just one click



HELLO TOUCH PANELS.

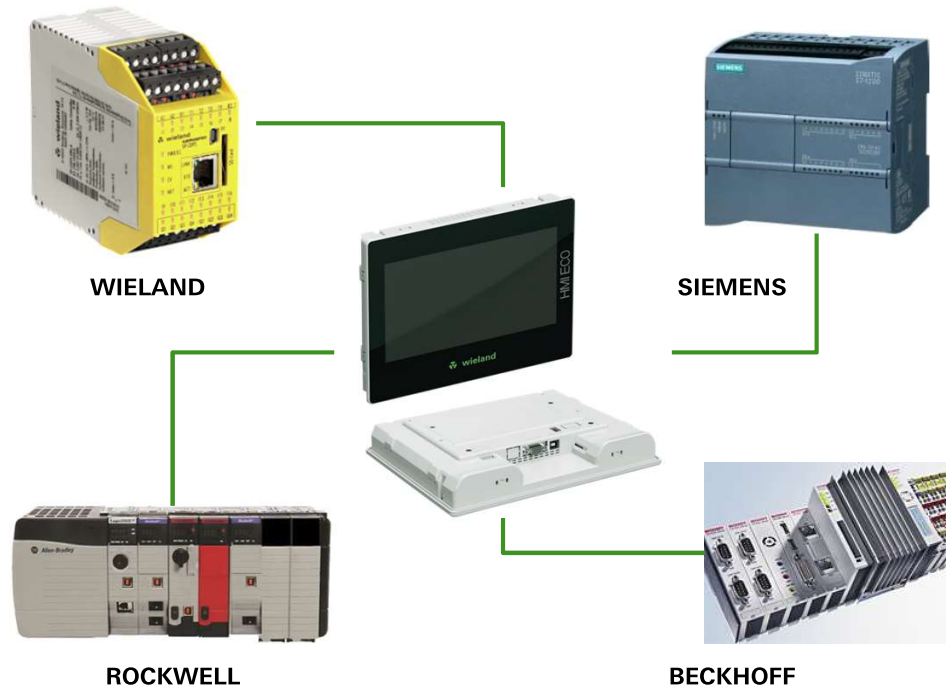
# FLEXIBLE COMMUNICATION.



PLUG&PLAY software drivers for common control units offer flexible communication and faster connectivity

## YOUR BENEFIT

- + Ready-to-use software drivers for over 40 manufacturers
  - + Siemens LOGO, S7 200, 300, 1200 and 1500
  - + Rockwell Compact, Control, MicroLogix and more
  - + ADS for Beckhoff TwinCAT 2 / 3
  - + Toggle Master or Slave Mode with just one click
- + 6 parallel connections



HELLO TOUCH PANELS.



HMI-Eco  
Touch Panels  
with customer specific  
front design

HELLO TOUCH PANELS.



## CUSTOMER-SPECIFIC DESIGN.




With the **MyLogo** option, clients with more than 100 panels/year can order HMI-ECO Touch Panels with their own front design

### YOUR BENEFIT

- + Custom panel front color
- + Custom logo on the panel
- + Replace HMI-ECO text with your own product brand name
- + Prestige for machine builders towards customers
- + Wieland quality with exclusive order number



HELLO TOUCH PANELS.

A large industrial CNC machine, likely a lathe or mill, is shown in a factory setting. The machine is dark grey with a blue control cabinet on the right. A circular text overlay is positioned on the left side of the machine. The control panel features a small screen, a keypad, and various indicator lights. A blue coiled cable is connected to the machine. The background shows a window with horizontal blinds.

Panels with  
software driver for  
more than  
40 manufacturers

HELLO TOUCH PANELS.